

DAWSON CITY, YUKON
A GREAT PLACE TO STAY
BONANZA GOLD
Motel and RV Park

CABLE TV
RV WASH
MOTEL
Kitchenette, Queen & Double Rooms
Air Conditioners for Fans • Pet Friendly
& RV PARK
Full Hookups • 15/30/50 Amp • Cable TV
Dawson's Full Service Sites!

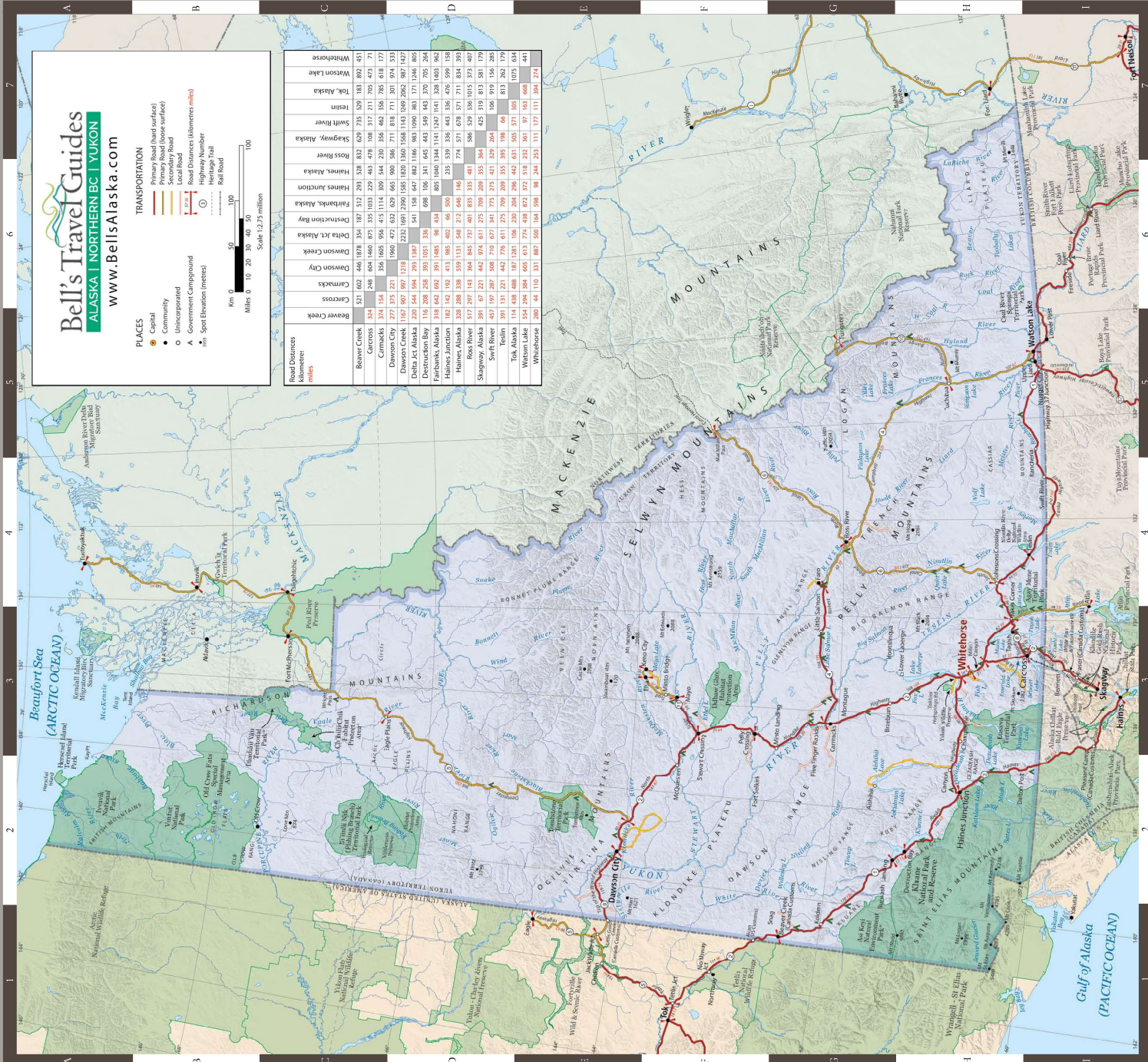
WINDMILL
WiFi Internet
5th Package
Toll Free: 888-993-6789
www.bonanzagold.ca

lure studios
AT LUMEL
WE ARE FOCUSED ON CUSTOMER INCLUSIVITY.
We warm up the Yukon winter and contribute to the summer sizzler!
101 KESLAV, WHITEHORSE, YT
WWW.LURESTUDIOS.COM AND AN ELECTRIC ENVIRONMENT

FACE TO FACE WITH THE NORTH
yukon wildlife preserve

WATSON LAKE
GATEWAY TO THE YUKON
Start planning your trip:
www.watsonlake.ca
867-535-8000
Yukon
WATSON LAKE
RV PARK

The Most Popular RV Park in the Yukon
HI COUNTRY RV PARK
Unique facilities • 23/24 hour service • Pet-friendly • Partial Hookups
WiFi • Cable TV • Dump Station • Laundromat • Chan Showers
Convenience Store • Gift Shop • T-shirts • Coin-Op RV Wash
Windshield Repair Available
HI Country RV Park
1-877-458-5806
867-667-7443
ACCOUNTS@YK.COM



Yukon
UNDISCOVERED ADVENTURE
@travelyukon

#exploreyukon
Follow us on Facebook, Instagram and Twitter for road tips and photography tips. Don't forget to contribute your own unique Yukon photos by using #exploreyukon for a chance to be featured on our feeds.

7 photo-op destinations
1. Mile Canyon HS
2. Midnight Dome, Dawson City HS
3. Klondike National Park and Reserve HS
4. Emerald Lake HS
5. Five Finger Rapids CS
6. Bombadier Hermit Park HS
7. Haines Highway HS
travelyukon.com/resources

3 key tips for road trips

- 1. SUPPLIES**
You may have to travel long distances between towns and there may not be a gas station or one that stocks up on snacks when you stop. No hungry driving, please.
- 2. WILDLIFE**
Watch out for bear - regional levels on or near roads are high. Stay alert. Keep your distance and avoid lingering.
- 3. NAVIGATION**
No cell service in some locations means you can't rely on Google Maps. Download a map app and use that app to mark your routes.

Unfold wonders, not maps.
Download the Yukon Signs and Sites app - think of it as your virtual guide to road companions, red wildlife viewing and real points of interest.

4 unique Yukon experiences checklist
We double dare you to give these a try:

- Swig & Sour Tea Cocktails in Dawson City HS
- Gold Leaf Beer - Fair Fever at Watson Lake HS
- Cross into the Arctic Circle on the legendary Dempster Highway CS
- Sandboard down the dunes of the world's smallest desert near Carcross HS



FEATURING
British Columbia
Alaska - Washington

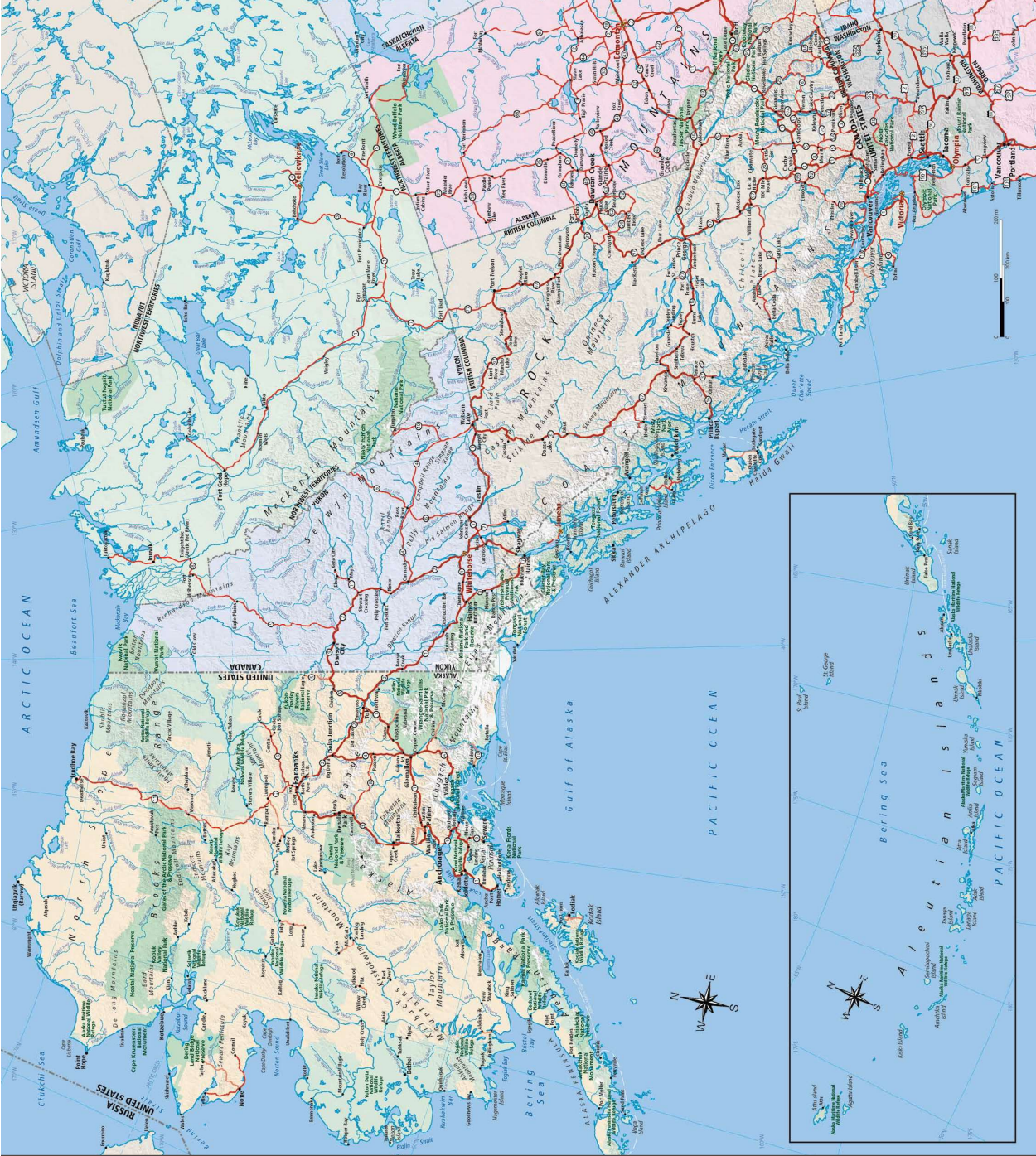
Yukon

Bells Travel Guides

2023 FREE

It's just like a fairytale. But if the animals start talking to you, you're concerned.

Learn where to see fascinating creatures and where to find the best scenery.



Distances shown are in miles	Anchorage	Delta Junction	Edmonton	Fairbanks	Healy	Kenai	Nome	Palmdale	Seattle	Wasilla	Whitcomb
Anchorage	0	115	115	115	115	115	115	115	115	115	115
Delta Junction	115	0	115	115	115	115	115	115	115	115	115
Edmonton	115	115	0	115	115	115	115	115	115	115	115
Fairbanks	115	115	115	0	115	115	115	115	115	115	115
Healy	115	115	115	115	0	115	115	115	115	115	115
Kenai	115	115	115	115	115	0	115	115	115	115	115
Nome	115	115	115	115	115	115	0	115	115	115	115
Palmdale	115	115	115	115	115	115	115	0	115	115	115
Seattle	115	115	115	115	115	115	115	115	0	115	115
Wasilla	115	115	115	115	115	115	115	115	115	0	115
Whitcomb	115	115	115	115	115	115	115	115	115	115	0
Whitcomb	115	115	115	115	115	115	115	115	115	115	115

Don't Get Lost!

Find your way with the FREE Bells Guides!

Discover the Best Places to Stay & Play with Bells Alaska Mapbook, Alaska Highway Mapbook and Inside Passage Mapbook

Available at
Visitor Centers,
Service Stations,
Campgrounds,
Hotels & Attractions

www.BellsAlaska.com

Refuel, Refresh, Recharge

TAGS

2000 & GAS

RV Park • Convenience Store • Café

24 Hour Pay-at-Pump

Located at the North end of Watson Lake
Adjacent to the Sign Post Forest

Two Great Reasons to Stop in Whitehorse!

AIRPORT CHALET

Food & More • Licensed Family Restaurant
Guest Lounges • Pet Welcome
Huge Parking Lot

867-668-6182, Toll Free 866-668-6182
www.airportchalet.com

FAS GAS PLUS

Self-Service of the Best Price
Fuel • Car Wash • Tire Service
Major Franchising Licenses

Bank Machine
Pet Wash • Pet Grooming
Shower & Lockers
Smoke & Lounge

888-413-3618
www.fasgas.com

AT GATHER

WE ARE FOCUSED ON COMMUNITY AND SUPPORTING LOCAL!

COME ENJOY:

DRAFT BEER • WINE • COFFEES, TEAS AND AMAZING LATIN INSPIRED FOOD!

101 KEESH ST. WY. WHITEHORSE, YT. N.W. 867-453-2322

AT GATHER

WE ARE FOCUSED ON COMMUNITY AND SUPPORTING LOCAL!

COME ENJOY:

DRAFT BEER • WINE • COFFEES, TEAS AND AMAZING LATIN INSPIRED FOOD!

101 KEESH ST. WY. WHITEHORSE, YT. N.W. 867-453-2322

SLOW DOWN & ENJOY THE RIDE

ADVENTURE. HISTORY. CULTURE.

Join us in the NORTHERN ROCKIES of British Columbia, Canada

www.tourismnorthernrockies.ca

SLOW DOWN & ENJOY THE RIDE

ADVENTURE. HISTORY. CULTURE.

Join us in the NORTHERN ROCKIES of British Columbia, Canada

www.tourismnorthernrockies.ca

DAWSON CREEK VISITOR INFORMATION CENTRE

Travel planning professionals
150+ guided walking tours

250.788.1943
tourist@gochetwynd.com

DAWSON CREEK VISITOR INFORMATION CENTRE

Travel planning professionals
150+ guided walking tours

250.788.1943
tourist@gochetwynd.com

ANNUAL INTERNATIONAL CHAIRSAW CARVING CHAMPIONSHIPS

2ND WEEKEND IN JUNE

150+ guided walking tours

250.788.1943
tourist@gochetwynd.com

ANNUAL INTERNATIONAL CHAIRSAW CARVING CHAMPIONSHIPS

2ND WEEKEND IN JUNE

150+ guided walking tours

250.788.1943
tourist@gochetwynd.com

CHETWYND

100% LOCAL

250.788.1943
tourist@gochetwynd.com

CHETWYND

100% LOCAL

250.788.1943
tourist@gochetwynd.com