

Yukon Lodges and Cabins

From rustic to regal, your clients will enjoy their stay in a cozy Yukon lodge or cabin.

Yukon Lodges

There are plenty of unique properties to choose from.

- 1 Aurora Island
- 2 Boréale Lodge
- 3 Dalton Trail Lodge
- 4 Discovery Yukon Lodgings
- 5 Hotel Carmacks Cabins
- 6 Inn on the Lake
- 7 Kaleido Lodge Yukon
- 8 Kluane Cabins
- 9 Mount Logan EcoLodge
- 10 Muktuk Adventures
- 11 Northern Lights Resort & SPA
- 12 Sky High Wilderness Ranch
- 13 Southern Lakes Resort
- 14 Takhini – Yukon's Hot Springs Resort
- 15 Tincup Wilderness Lodge
- 16 Triple J Cabins
- 17 Wheaton River Wilderness Retreat
- 18 Wolf Lake Wilderness Lodge
- 19 Yukon Black Spruce Cabins
- 20 Yukon Lake Cabins



Lodge Amenities

	Aurora Island	Boréale Lodge	Dalton Trail Lodge	Discovery Yukon Lodging	Hotel Carmacks Cabins	Inn on the Lake	Kaleido Lodge	Kluane Cabin	Mount Logan Ecolodge	Muktuk Adventure	Northern Lights Resort & Spa	Sky High Wilderness Ranch	Southern Lakes Resort	Takhini – Yukon's Hot Springs Resort	Tincup Wilderness Lodge	Triple J Cabins	Wheatonriver Wilderness Lodge	Wolf Lake Wilderness Retreat	Yukon Black Spruce Cabins	Yukon Lake Cabins
Open in Summer	•	•	•	•	•	•	•	•	•	•	•	•	•	•	•	•	•	•	•	•
Open in the winter	•	•			•	•	•			•	•	•	•	•			•		•	•
Wi-Fi		•	•	•	•	•	•			•		•	•	•	•	•	•	•	•	•
Electricity	•	•	•	•	•	•	•	•	•	•	•	•		•	•	•	•		•	•
Meals Available	•	•	•	•	•	•	•			•	•	•		•	•	•	•		•	
Self-catering option	•	•		•	•	•	•	•	•	•	•		•	•	•			•		•
Fly-in only																	•		•	
Boat-in only																				
Fly and boat in	•				•	•							•							
Offers excursions	•	•	•	•		•	•	•	•	•	•	•	•	•			•		•	•
Ensuite bath		•	•	•	•	•	•			•	•	•		•	•	•	•		•	•
Indoor shared toilet/ bathing facility					•			•	•								•			•
Outdoor toilet/shared bathing facility	•				•			•	•			•					•			•



Aurora Island Adventure Retreat

Nestled on an Island, surrounded by 10 Mile Lake, the Aurora Island Adventure Retreat is the year-round escape you need to relax, recharge and adventure! Fly into your home away from home for a guided or self-guided experience. Rejuvenate with a woodfire sauna session after trying to catch the big one. Capture the beauty of your surroundings and keep your eye out for the Aurora Borealis that may appear once the sky darkens.

CAPACITY	11
OPEN	Year round based on lake freeze/thaw
ROOMS	2 Cabins: Cabin 1 – 1 x queen bed (separate room) + 1 x double & 1 x twin beds + 1 x double & 1 x twin beds (loft) Cabin 2 – 1 x double bed & 1 x twin bed
AMENITIES	Woodfire sauna, shower, kitchen, fridge, BBQ, firepit
MEALS	Included in guided packages; not included for self-guided
FEATURES	Private island, dock, fishing boats, canoes/kayaks, snowshoes
GUEST FACILITIES	Generator electricity, outdoor toilet, wood stove



Boréale Lodge

Our Boréale Lodge is located 30 minutes from Whitehorse airport, nestled amongst the mountain peaks close to beautiful Carcross, Yukon. Our lodge features a great common room, large dining space, a cozy library and huge windows for mountain gazing. Relax after your Yukon adventure in our outdoor mountain-facing spa tub and recharge by an evening bonfire. We offer six private rooms and are open year round, with impeccable hospitality.

CAPACITY	12
OPEN	Year round
ROOMS	2 rooms with 2 queen beds 2 rooms with 1 king bed 2 detached suites with 1 king bed
AMENITIES	Hot tub, bonfire pit, Wi-Fi
MEALS	Includes breakfast; evening meals available for purchase
FEATURES	Aurora viewing platform, walking trail
GUEST FACILITIES	Private Bathrooms



Dalton Trail Lodge

First class wilderness and fishing lodge, located at Dezadeash Lake, bordering Kluane National Park. International gourmet cuisine. Our guests can expect very clean accommodation, first class service and fantastic meals (a la carte breakfast, individually prepared lunch bag and 4 course dinner). We offer guided fishing and adventure trips in and around Kluane National Park.

CAPACITY	30
OPEN	May 27 to September 30
ROOMS	8 x single and 2 x double rooms in main lodge 10 suites with 2 beds
AMENITIES	Restaurant, bar, games room, tennis court
MEALS	Included
FEATURES	Tackle shop, mountain bikes, canoes, boat rental, guided fishing and adventure tours
GUEST FACILITIES	Private bathrooms



Discovery Yukon Lodging

Discovery Yukon Lodgings has been described by guests as an oasis of green and wildflowers. We are nestled at the foothills of Kluane National Park and Reserve, at km 1818 Alaska Highway – 50 km southeast of Beaver Creek, midway between Whitehorse and Fairbanks, Alaska. Each of our cozy hand-crafted log cabins has its own private bathroom, deck, barbecue and uninterrupted mountain views. For those who like more space, our two fully furnished Queen Suites are ideal. A couch converts to an extra queen size bed for those travelling with family.

CAPACITY	14
OPEN	Mid May to mid September
ROOMS	Log cabins with 2 beds Queen Suites with 1 queen + double sofa bed
AMENITIES	Restaurant, Wi-Fi, telephone, laundromat, oven in communal kitchen (extra charge)
MEALS	Breakfast and dinner (additional cost)
FEATURES	Guided aurora viewing, self-guided hiking, canoeing, biking, and aurora viewing, Kluane Icefields flightseeing from our own private air strip
GUEST FACILITIES	Microwave, fridge, coffee maker, kettle and toaster in all the rooms, BBQ's on all decks, private bathrooms



Hotel Carmacks Cabins

Discover warm Yukon hospitality in the heart of Carmacks, where the Yukon and Nordenskiöld Rivers meet. The Hotel Carmacks Cabins offer a comfortable stay with mountain views and cozy cabins. Guests can relax in the on-site bar and restaurant. Nearby amenities include a grocery store, gas station, and RV park. This welcoming property reflects the spirit of the Little Salmon–Carmacks First Nation and the local community’s small-town charm. It's the perfect rest stop for your northern journey.

CAPACITY	8 – 4 people per cabin
OPEN	Cabins open summer only
ROOMS	8 cabins with 2 double beds
AMENITIES	Lounge, washrooms, restaurant, gas and grocery store, Wi-Fi
MEALS	Onsite restaurant – lunch and dinner available
FEATURES	Cabins
GUEST FACILITIES	Coffee maker, TV



Inn on the Lake

Born and raised in the Yukon, Carson Schiffkorn was intrigued by the empty log building on Marsh Lake and knew instantly it was meant to be something more. In 1996, he transformed it into a welcoming inn with a distinctive “Rustic-Chic” charm. Cathedral ceilings, expansive decks, and massive Engelmann spruce beams create a warm, inviting atmosphere. As a chef, Carson curates communal dining experiences inspired by the Yukon, often featuring visiting chefs and global flavours.

CAPACITY	29
OPEN	Year round
ROOMS	5 rooms in the main Lodge: 1 room with 1 queen bed 1 room with 1 queen + 1 single bed 1 room with 2 single beds 1 suite with 1 king bed + single pullout; 1 suite with 2 queen beds + double pullout Fireweed Cottage – 3 queen beds + 1 single bed 2 separate suites each with 1 queen bed + 1 single pullout
AMENITIES	Wi-Fi, hot tub, canoes, kayaks, kicksleds, snowshoes, pool table, snowmobile tours, fishing gear
MEALS	Meals available for additional cost – reservations required
FEATURES	Lake front, Northern Lights viewing
GUEST FACILITIES	Private Bathrooms



Kaleido Lodge Yukon

Named for the kaleidoscopic nature of the aurora, the lodge is just 25 minutes from Whitehorse. Situated in a tranquil, forested area away from the city lights, it is in an ideal location for aurora viewing. Lights in the lodge dining area are turned off at 10pm each evening to allow for maximum darkness and guests can watch from inside the lodge, or head outside for viewing and photography. The dining room is also the communal hub of the lodge where guests can gather to watch the aurora at night or relax during the day over a hot beverage.



CAPACITY	14
OPEN	July to mid-October; mid-November to March
ROOMS	2 Standard rooms – 2 twin beds 1 Superior Room – 1 king bed 1 Suite – 2 queen beds + private kitchen
AMENITIES	Dining room, shared kitchen with free hot drinks, Wi-Fi
MEALS	Breakfast, dinner, light meal, beverages (extra fee)
FEATURES	Northern Lights viewing, winter activity day tours can be arranged
GUEST FACILITIES	Private bathrooms, hair dryer



Kluane Cabins

Kluane Cabins offer seasonal off-grid wilderness stays just 20 minutes south of Haines Junction, near Kathleen Lake. With stunning mountain views, the clean, well-equipped cabins are an ideal base for exploring. New: group facilities for up to 30 guests, including a large kitchen cabin and two deluxe heated wall tents – perfect for retreats, gatherings, and events in the heart of the Yukon wilderness.

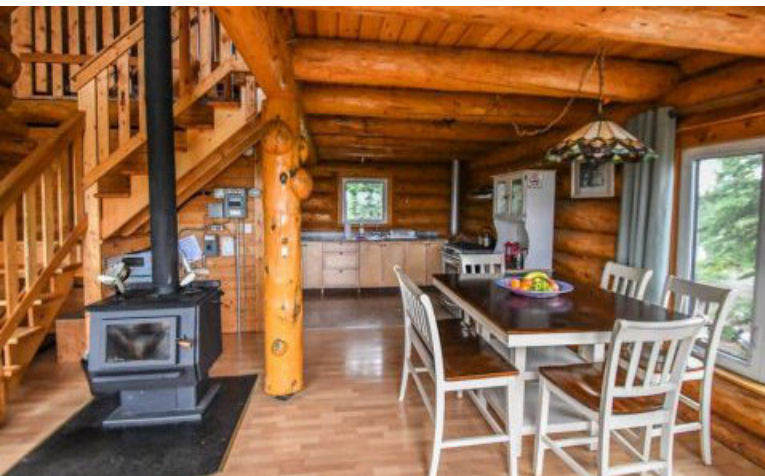
CAPACITY	28
OPEN	May long weekend to Thanksgiving weekend
ROOMS	8 Cabins with kitchenettes: 1 cabin with 1 double bed + 2 bunks + 1 single bed 2 Cabins with 1 queen bed; 2 Cabins with 2 single beds 2 Cabins with 1 queen bed + 1 single bed + fold down couch Chalet with 1 queen bed + 1 single bed + sofa bed
AMENITIES	Picnic tables, BBQ's, firepits, 2 private heated washrooms with showers/toilets. For groups – fully equipped kitchen available to rent, 2 large wall tents available
MEALS	None – self-catered
FEATURES	Highly private off-grid cabins in a wilderness setting, late summer (self-guided) aurora viewing
GUEST FACILITIES	Private use outhouses/wash stations, power packs, wood stoves, propane heaters, potable water, lanterns, solar panels, other supplies for loan or rent, all linens



Mount Logan Ecolodge

Mount Logan EcoLodge is your Yukon sanctuary, a place where the rugged beauty of Kluane National Park meets the warm embrace of a cozy lodge. Nestled at the foot of the stunning St. Elias Mountains, and a 2 hour scenic drive from Whitehorse, our lodge is more than just accommodation – it's an experience.

CAPACITY	18
OPEN	Year round
ROOMS	1 Suite: 1 King + double bunk beds 2 Rooms: 2 King beds Yurt: 1 King + double bunk beds 1 Cabin: 1 Queen bed 1 Cabin: 1 King bed
AMENITIES	Sauna, firepit, sun room, hiking trails, Wi-Fi
MEALS	Breakfast, lunch (on demand), 3-course dinner
FEATURES	Breathtaking views, guided tours, aurora viewing (self-guided)
GUEST FACILITIES	Bathrooms, dining room, sun room, parking



Muktuk Adventure Ltd.

Our cabins are conveniently located 25 minutes from downtown Whitehorse, in the scenic Ibex Valley. Undoubtedly one of the most beautiful, natural landscapes you will ever encounter, the Yukon is legendary. No matter if it's summer or winter, our cozy and rustic cabins are the perfect home away from home. You can book the cabins and explore the Yukon at your own leisure or choose one of our packages that includes meals and adventures.

CAPACITY	4
OPEN	June 1 to September 15
ROOMS	1 Cabin with 1 x queen & 2 x single beds in sleeping loft; bookable year round 1 Cabin with 2 bedrooms; summer only
AMENITIES	Main log lodge, guided activities available, Wi-Fi at the lodge
MEALS	Can be added at the main lodge
FEATURES	Views over the Ibex Valley, sled dog yard
GUEST FACILITIES	Cabin 1 – Private bathroom, kitchen, wood stove, running water in summer, power Cabin 2 – Shared bathroom in lodge, wood stove, kitchenette, no running water or power



Northern Lights Resort & Spa

Just 25 minutes south of Whitehorse, Northern Lights Resort & Spa offers a cozy, luxurious retreat designed around the magic of the Aurora. Set on 145 private acres, it features stylish accommodations, guided nightly Aurora viewings, and curated adventures like dog sledding, snowmobiling, and wildlife tours. Guests can unwind in the wellness area with sauna & massage services. Known for warm hospitality and stunning scenery, it's one of the top-rated Northern Lights destinations in the world. Awarded Trip Advisor's Traveler's Choice Best of the Best Inn's and B&B's in 2025.

CAPACITY	16
OPEN	Mid-August to mid-April
ROOMS	3 Aurora Glass Chalets 2 Alpine King Chalets 2 Alpine Twin Chalets 1 Alpine Log Chalet Deluxe
AMENITIES	Wellness spa, saunas, Wi-Fi
MEALS	All inclusive packages with gourmet meals
FEATURES	Walking trails, snowmobiling, kicksledding, snowshoeing
GUEST FACILITIES	Private bathrooms, 2-3 heating sources



Sky High Wilderness Ranch

For an authentic, off grid, adventure of a lifetime Sky High Wilderness Ranch is the place to be! We've staked our claim in the Coastal Mountains of Southern Yukon where the value of our landscapes would outrank any nuggets you will ever find in the Yukon's creeks. At Sky High we know our real riches lie not only in our landscapes but in the Cozy Cabins and lodge nestled in the woods surrounding Fish Lake and the companionship of our 4 legged friends, Huskies & Horses! We offer a traditional Yukon lifestyle where our visitors have the opportunity to experience life "off grid". Strike it rich at Sky High Wilderness Ranch. Coming in 2026: First Nation cultural programming. Ask for details.



CAPACITY	16
OPEN	Year round
ROOMS	5 lodge rooms – 2 guests each; only available to groups 1 cabin with 2 beds 1 cabin with 4 beds
AMENITIES	Firepit, BBQ, hiking trails, adventure activities available
MEALS	None
FEATURES	Off-grid, Northern Lights viewing
GUEST FACILITIES	Kitchen, wood stove, outhouse, gravity fed shower



Southern Lakes Resort

Open year-round, Southern Lakes Resort sits on 2.2 km of lakefront on Tagish Lake, surrounded by mountains and forests. Guests can enjoy Northern Lights viewing from all cabins (September – April), dog sledding, snowmobiling, and snowshoeing in winter. In summer, activities include hiking, fishing, boating, canoeing, kayaking, and ATV tours. The resort offers a restaurant and 10 cozy cabins and villas. It's also a perfect base for day trips to Skagway, Carcross, and Atlin.

CAPACITY	34
OPEN	May 30 to Oct 13, 2025; Nov 28, 2025 – Apr 5, 2026
ROOMS	3 cabins – 1 queen bed; 1 Cabin – 2 queen beds 1 Family Cabin – 1 queen + 2 twin beds 1 Cabin – 1 queen bed and kitchenette 1 Premium Family Cabin – 2 queen beds in 2 rooms 3 Deluxe Villas – 1 queen + 2 twin or 1 queen bed set up
AMENITIES	Outdoor sauna, hiking/snowshoeing trails, optional excursions, Wi-Fi
MEALS	Restaurant open for breakfast, lunch, dinner, summer beer garden
FEATURES	Tagish Lake & Coast Mountain views; Northern Lights viewing from all cabins/villas
GUEST FACILITIES	Private bathrooms, coffee/tea making facilities, some with TV's and kitchenette



Takhini - Yukon's Hot Springs Resort

Takhini - Yukon's Hot Springs Resort offers an authentic escape into nature, wellness, and Yukon culture. Just 20 minutes from Whitehorse, it showcases the best of the Yukon with natural hot springs, scenic trails for all seasons, and diverse accommodations – from budget-friendly glamping to fully serviced suites and luxurious **Stargazer Cabins**. Dine at our restaurant, soak under the midnight sun, or watch the Northern Lights from your doorstep. As the perfect gateway to Yukon adventures, our resort is where relaxation meets exploration.

CAPACITY	6
OPEN	Year round (opening Fall 2025)
ROOMS	3 Stargazer Cabins with 1 bed, kitchen, private deck
AMENITIES	Nearby Eclipse Hot Springs, restaurant, trails; Wi-fi
MEALS	Hot Rock Cafe at Eclipse Nordic Hot Springs (opening winter 2025/26)
FEATURES	Glass wall and ceiling panels for stargazing, Northern Lights viewing & mountain views.
GUEST FACILITIES	Private bathrooms, fully equipped kitchens, coffee/tea making, toiletries



Tincup Wilderness Lodge

Situated right on the shore of Tincup Lake close to Kluane National Park in Canada's Yukon Territory, surrounded by mile up upon mile of unspoiled natural landscape, Tincup Wilderness Lodge enjoys a truly unique location. The surrounding Ruby Range mountains provide views of breathtaking beauty from dawn to dusk. The Lodge can be reached only by helicopter or floatplane. In order to ensure our guests' undisturbed privacy in a family environment, we limit bookings to a maximum of 8-10 guests per week. Whether you actively engage in the various activities on offer, or simply spend your time relaxing and enjoying the peace and quiet, your stay will be a truly unforgettable experience.

CAPACITY	10
OPEN	Mid June to mid September
ROOMS	5 Rooms each with 2 beds or 1 queen
AMENITIES	Boat launch, bar, hot tub, Wi-Fi, guided tours, guided fishing, self-guided fishing, boats, motors, fishing equipment
MEALS	All included
FEATURES	Canada Eco Award Winner 2025
GUEST FACILITIES	Private bathrooms



Triple J Cabins

The Triple J was opened in 1974 with 6 cabins built by three long-time residents of Dawson City. It has been expanded to the present complex of 58 rooms — cabin and hotel rooms, an 80-seat restaurant and a 56-seat lounge with an outdoor patio. All our cabins are non-smoking and have limited kitchenettes, 6 are pet friendly. All cabins are self-contained units. Kitchenettes are stocked with plates, cups, and cutlery. They have a microwave, fridge, kettle, coffee maker, and toaster. The cabins do not have hot plates or stoves.

CAPACITY	72
OPEN	Summer only (hotel is open year round)
ROOMS	18 cabins with 2 double beds
AMENITIES	24 hour front desk guest, laundry facilities, luggage storage, vending/ice machines, restaurant, café and lounge with outdoor seating, room service
MEALS	Available at restaurant
FEATURES	Large front balconies, free parking
GUEST FACILITIES	Private bath with shower, air-conditioning, TV, telephone, coffee maker + complimentary coffee, Wi-Fi



Wheaton River Wilderness Retreat

At the Wheaton River Wilderness Retreat we accommodate guests year-round. The cabins and guest rooms are all off the grid and located in the Wheaton River Valley. It is a place to relax, to have fun, to be outside, and to explore. But there's plenty of time...for an inspiring walk on the frozen river...to enjoy a good book...to sip your morning coffee as you marvel at the sun rise over the mountain tops...or watch the silver dance of the mystical Northern Lights.

CAPACITY	14+
OPEN	Year round
ROOMS	2 Cabins and 2 Guest rooms
AMENITIES	Sauna, outside Kitchen, picnic table, Wi-Fi around homestead
MEALS	No
FEATURES	Wilderness retreat, riverside
GUEST FACILITIES	Kitchenette, wood stove, outhouse



Wolf Lake Wilderness Lodge

This fishing trip of a lifetime begins with a scenic flight through the mountains into this remote area. The fishing is excellent, with an abundance of Lake Trout, Northern Pike, Whitefish, Burbot and a seemingly endless supply of Arctic Grayling. The Wolf River, which is the outflow from Wolf Lake, is said to be one of the best natural Arctic Grayling fisheries in the world. During the summer months we have nearly 24 hours of daylight, eliminating all restrictions to the length of your fishing day. In August as the nights grow darker, guests have a chance to witness the Northern Lights.

CAPACITY	18
OPEN	June to September
ROOMS	4 Cabins – each sleep 2 to 4 guests
AMENITIES	Screened deck, wood fired hot tub, kayaks, TV, Wi-Fi, games, licensed bar, main lodge
MEALS	3 Meals per day included
FEATURES	Wildlife viewing and photography opportunities, late season aurora borealis viewing
GUEST FACILITIES	Private bathrooms, linens



Yukon Black Spruce Cabins

Located just minutes from Whitehorse airport, Yukon Black Spruce Cabins feature four handcrafted cabins, designed in the style of a landscape hotel. Our cabins feature modern amenities in a private private forest setting. Cabins come complete with organic bedding, well-equipped kitchens, panoramic windows and private bathrooms.

CAPACITY	8
OPEN	Year round
ROOMS	4 cabins with one queen bed
AMENITIES	Sauna, fire pit, Wi-Fi
MEALS	Self-catered
FEATURES	Peaceful forest setting
GUEST FACILITIES	Kitchens, contactless check-in, board games, books, organic bedding and towels



Yukon Lake Cabins

We are situated next to nature's most unforgettable destination, located on the shores of Kluane Lake. Easily accessible by road, helicopter and float plane. We overlook Sheep Mountain and the glaciers of Kluane National Park and Reserve – a UNESCO World Heritage Site. We rent our “off grid” property as a whole package, this includes the Cabins and the Pondering Place.

CAPACITY	20
OPEN	Year round
ROOMS	Chalet – 1 queen in loft + 1 double bed on main floor 3 Cabins – 1 queen + 2 double beds 1 Cabin – 3 double beds 1 Suite – 1 queen bed 1 Suite 2 double beds
AMENITIES	In the main building (Pondering Place) – power, complete kitchen, bathrooms, fridge, freezers, barbecues, firepit, sauna, Wi-Fi, helicopter and float plane landing
MEALS	Self-catered or catered
FEATURES	Waterfront location, kayaking, hiking, Northern Lights viewing, optional adventure packages available
GUEST FACILITIES	Cabins



Contact Information: Tourism Yukon

Yas Yamamoto

Market Development Manager

P: 867.667.8795 E: yas.yamamoto@yukon.ca

Maurine Forlin

Marketing Specialist

North America, Developing Markets & RTO's

P: 867.334.9510 E: maurine.forlin@yukon.ca

Robin Anderson

Global Marketing Manager

P: 867.667.3532 E: robin.anderson@yukon.ca

Jennifer Glyka

Marketing Specialist

Media & Influencer Relations (North America)

P: 867.667.8410 E: jennifer.glyka@yukon.ca

[TRAVELYUKON.COM/TRADE](https://travelyukon.com/trade)

[TRAVELYUKON.COM/MEDIA](https://travelyukon.com/media)

